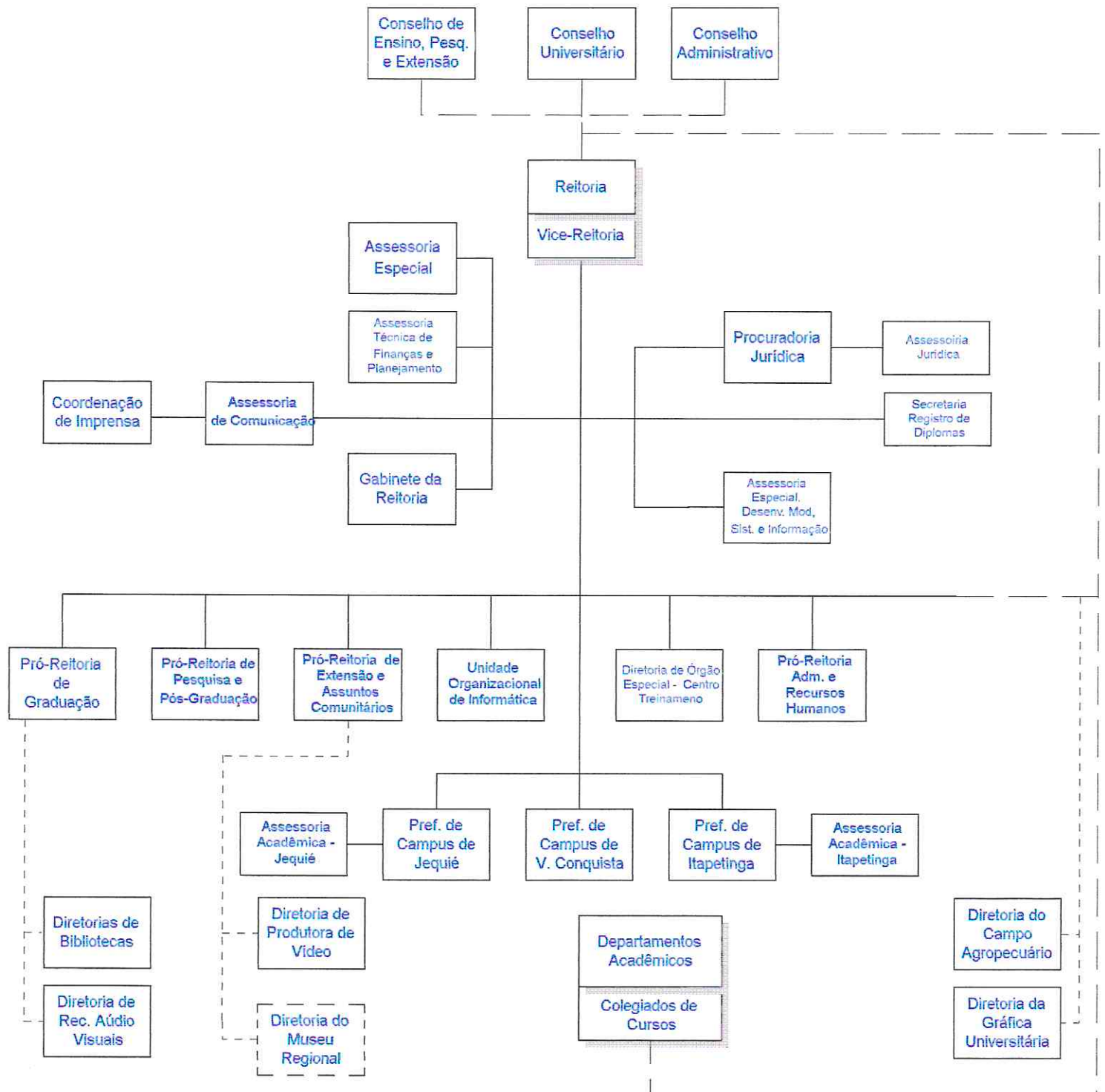




Conselho Universitário -
CONSUSU

Resolução 08/97

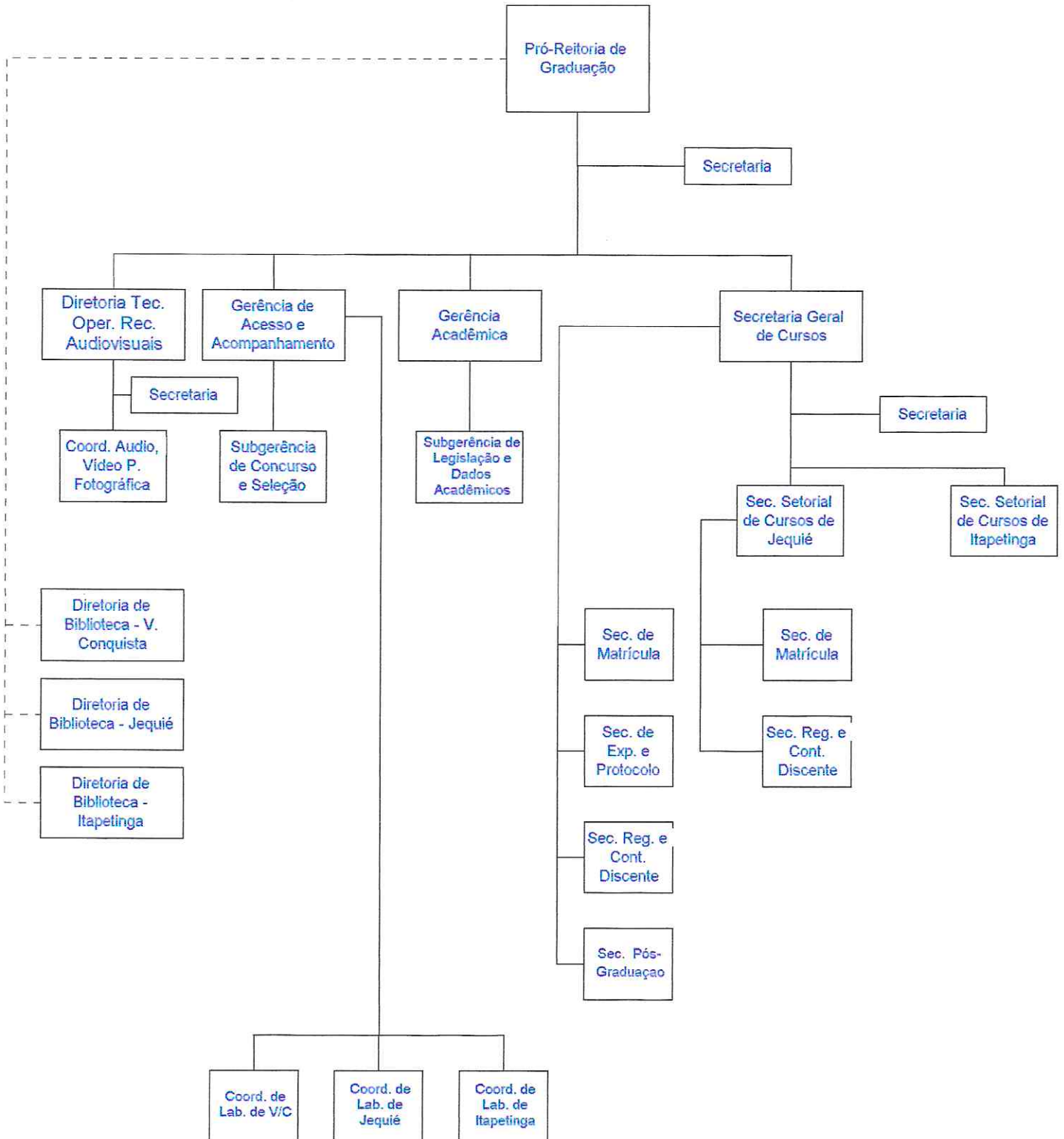
MACRO ESTRUTURA - APROVADA PELO CONSELHO UNIVERSITÁRIO DA UESB



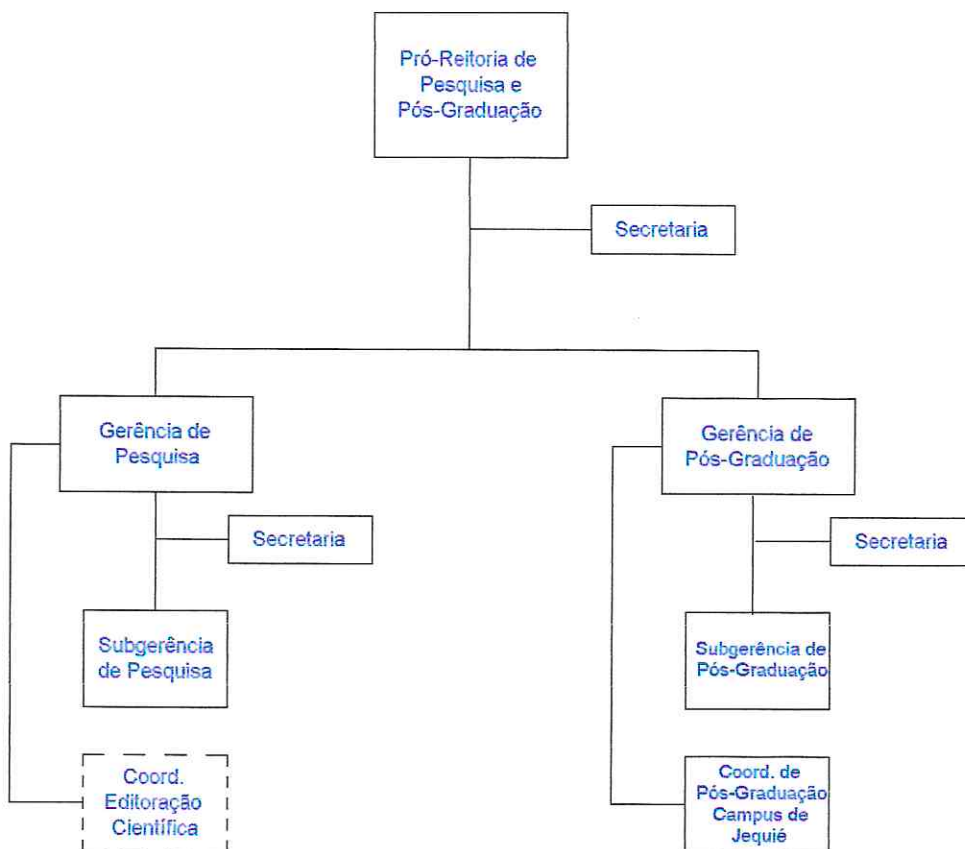
Legenda

- Nível Deliberativo Superior
- Subordinação Administrativa
- - - Órgão Suplementar

PRÓ-REITORIA DE GRADUAÇÃO



PRÓ-REITORIA DE PESQUISA E PÓS-GRADUAÇÃO

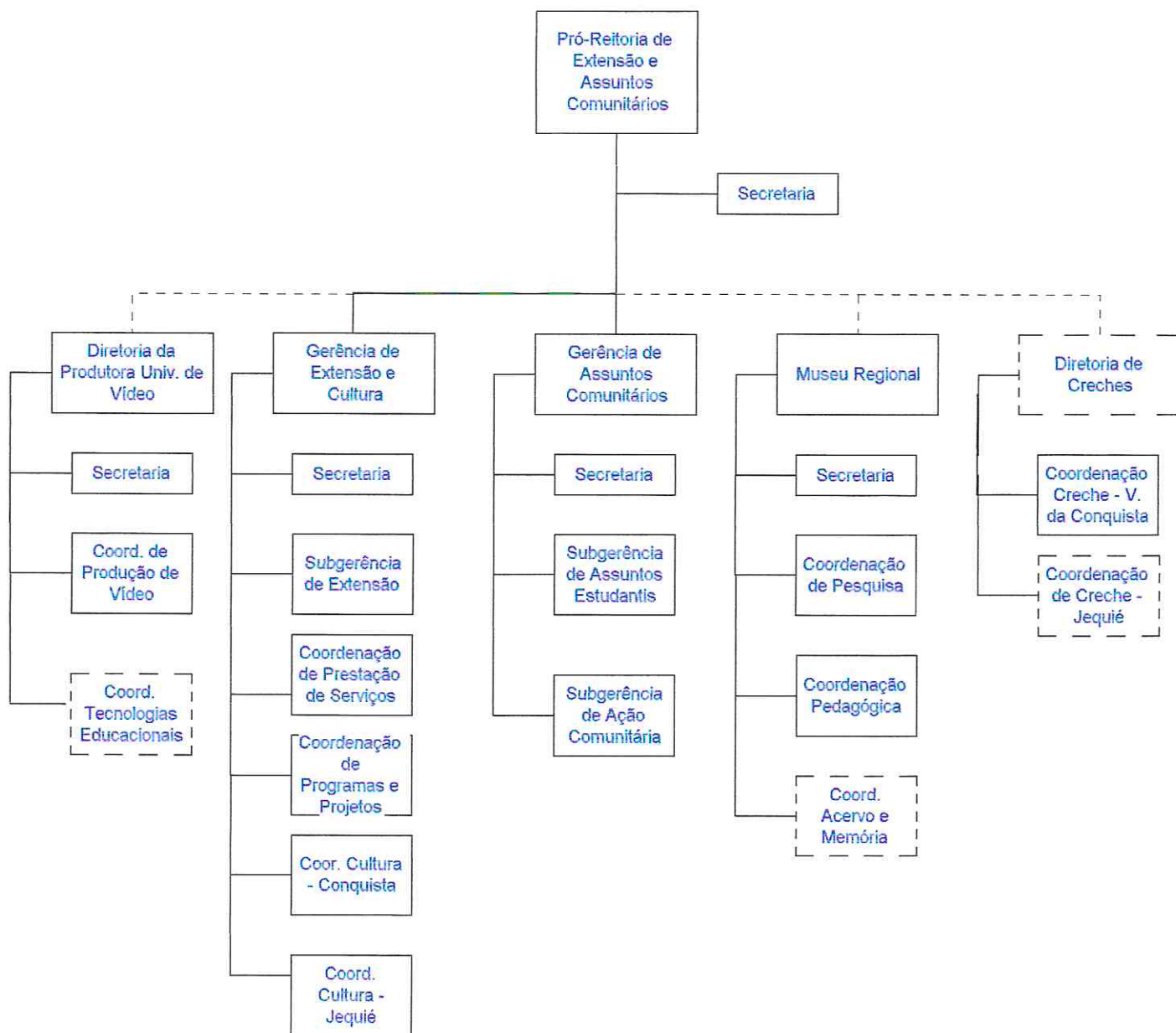


Legenda



Órgão Previsto

PRÓ-REITORIA DE EXTENSÃO E ASSUNTOS COMUNITÁRIOS

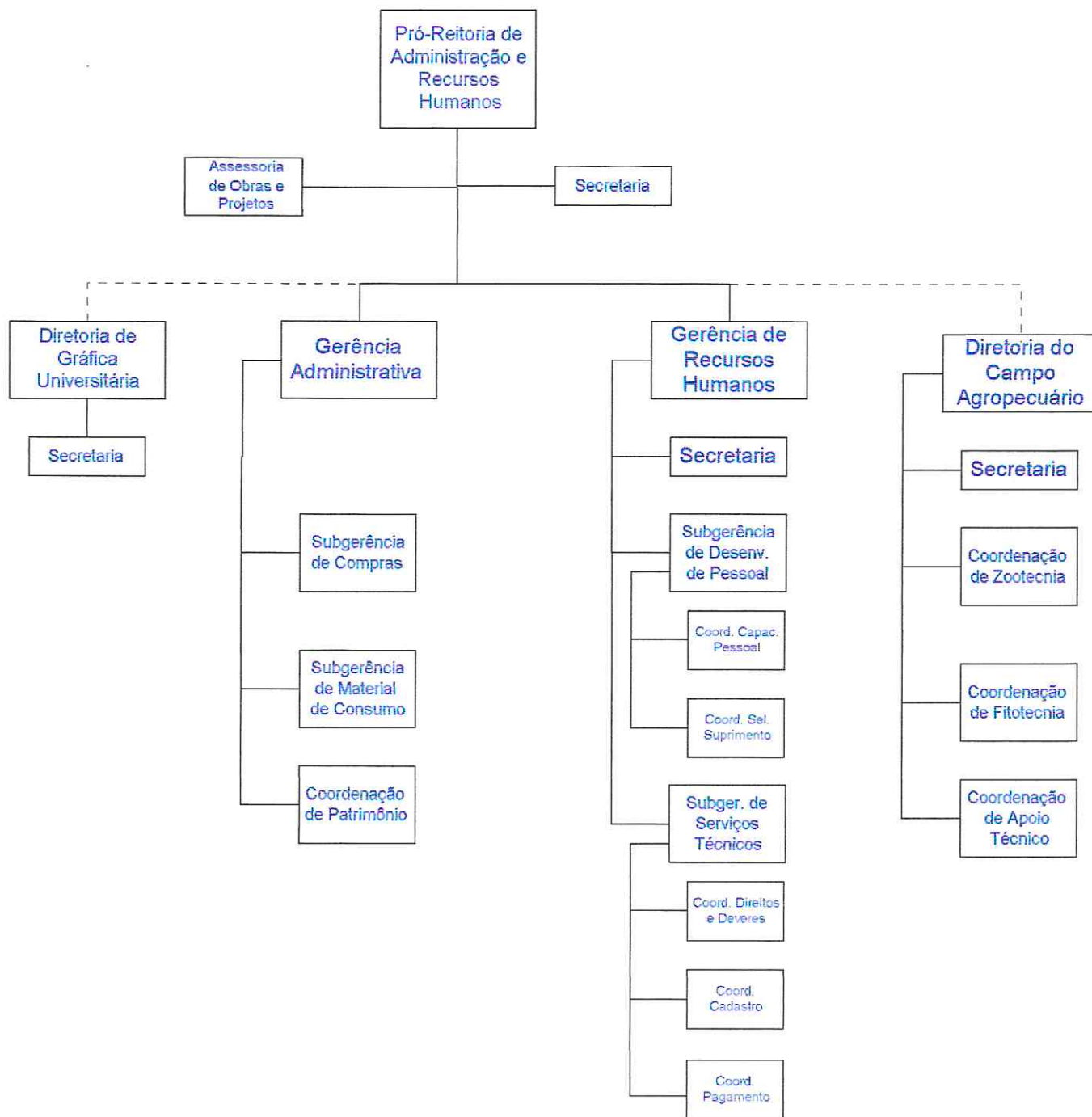


Legenda

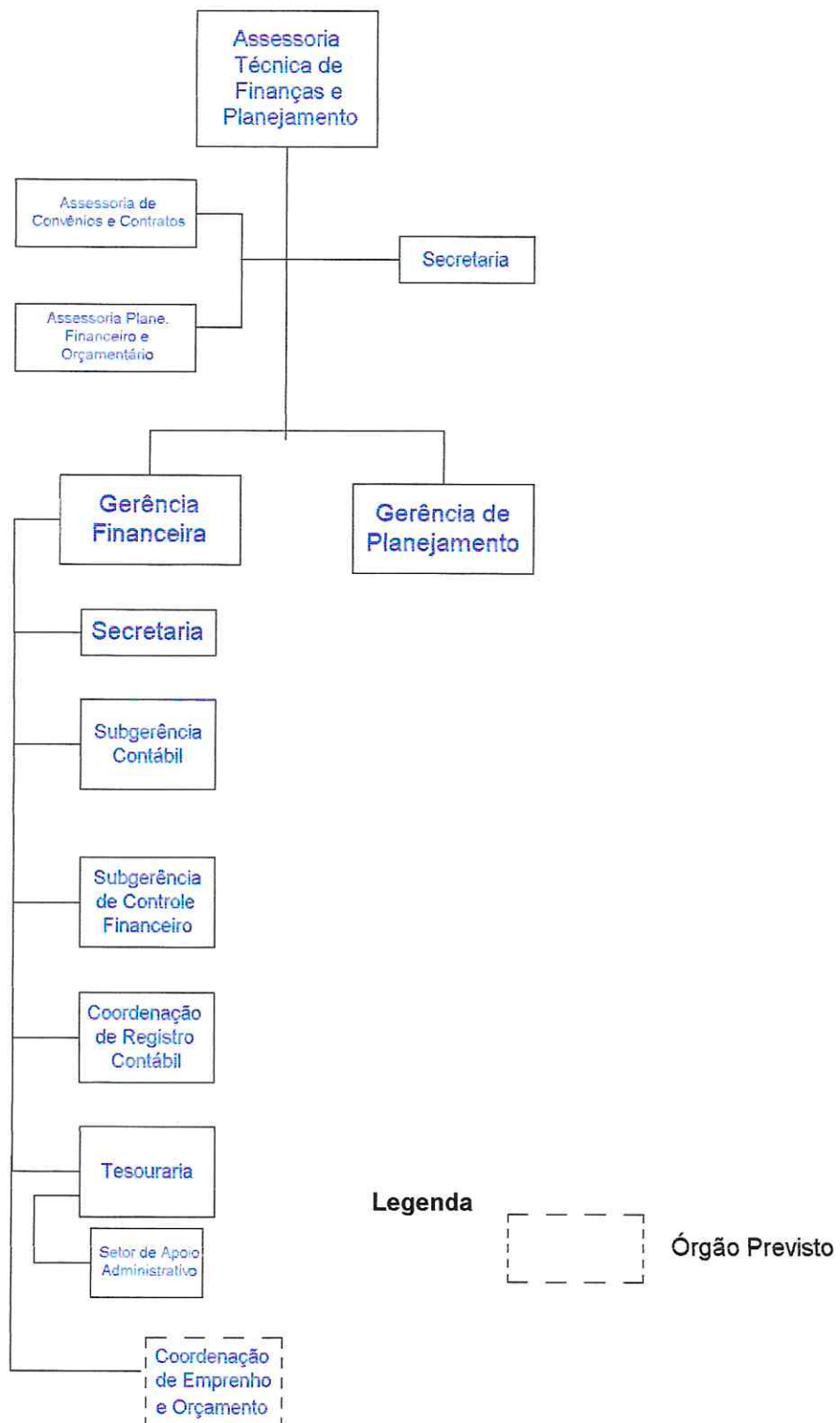
Órgão Previsto

----- Cooperação

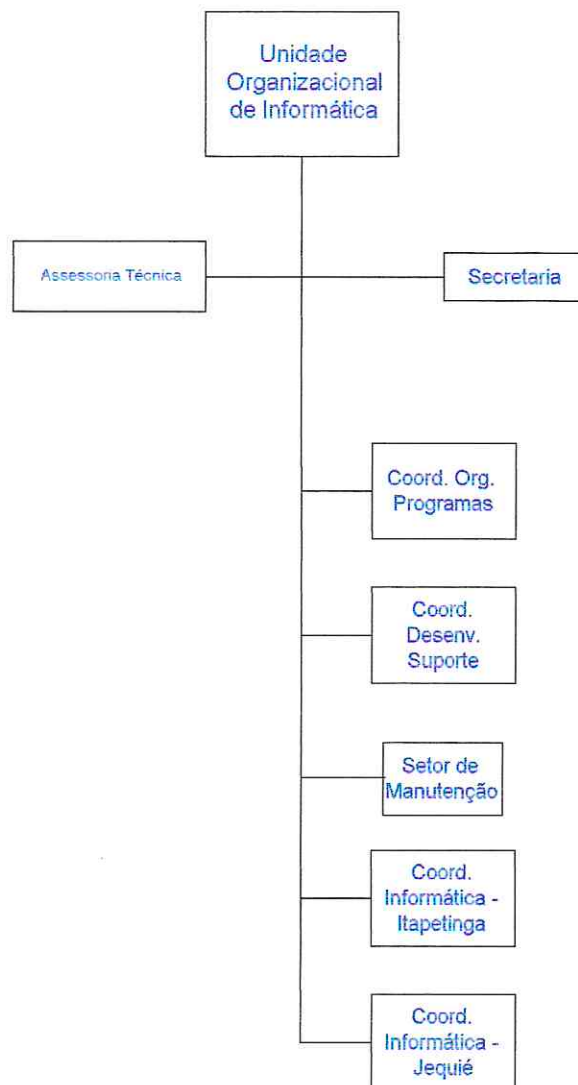
PRÓ-REITORIA DE ADMINISTRAÇÃO E RECURSOS HUMANOS



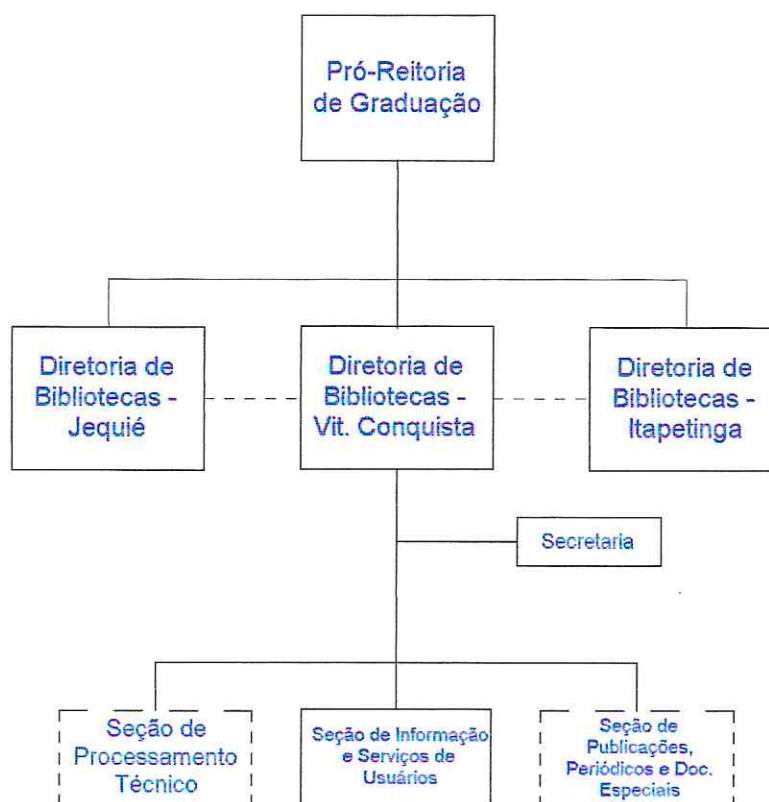
ASSESSORIA TÉCNICA DE FINANÇAS E PLANEJAMENTO



UNIDADE ORGANIZACIONAL DE INFORMÁTICA



DIRETORIA DE BIBLIOTECAS



Legenda

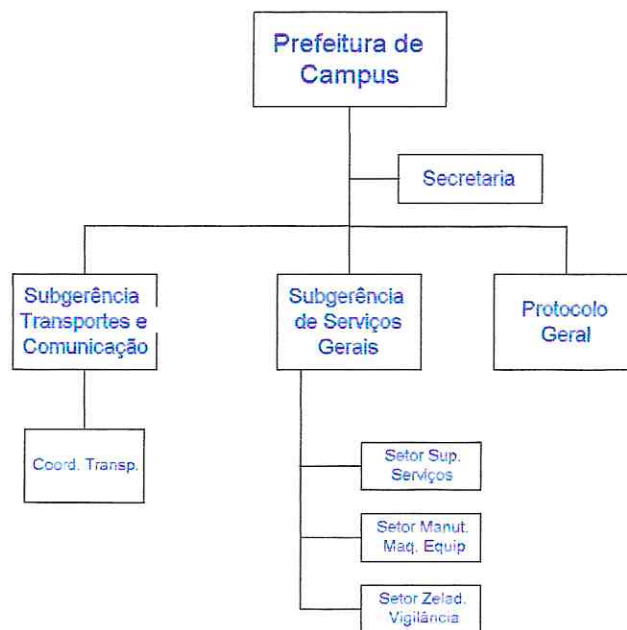


Órgão Previsto

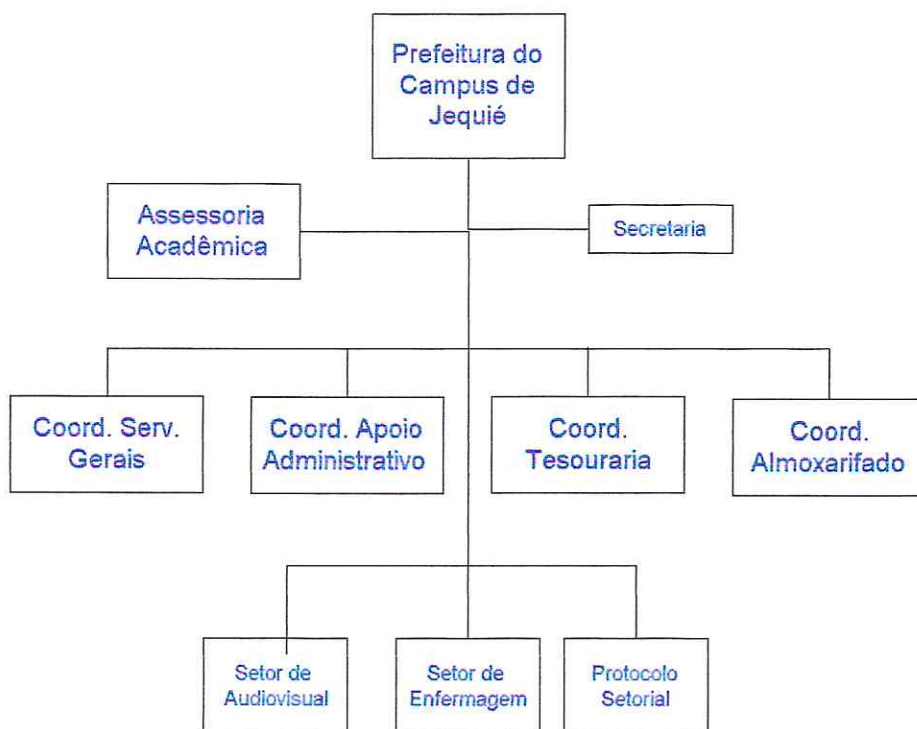


Cooperação

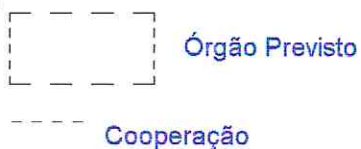
PREFEITURA DO CAMPUS DE VITÓRIA DA CONQUISTA



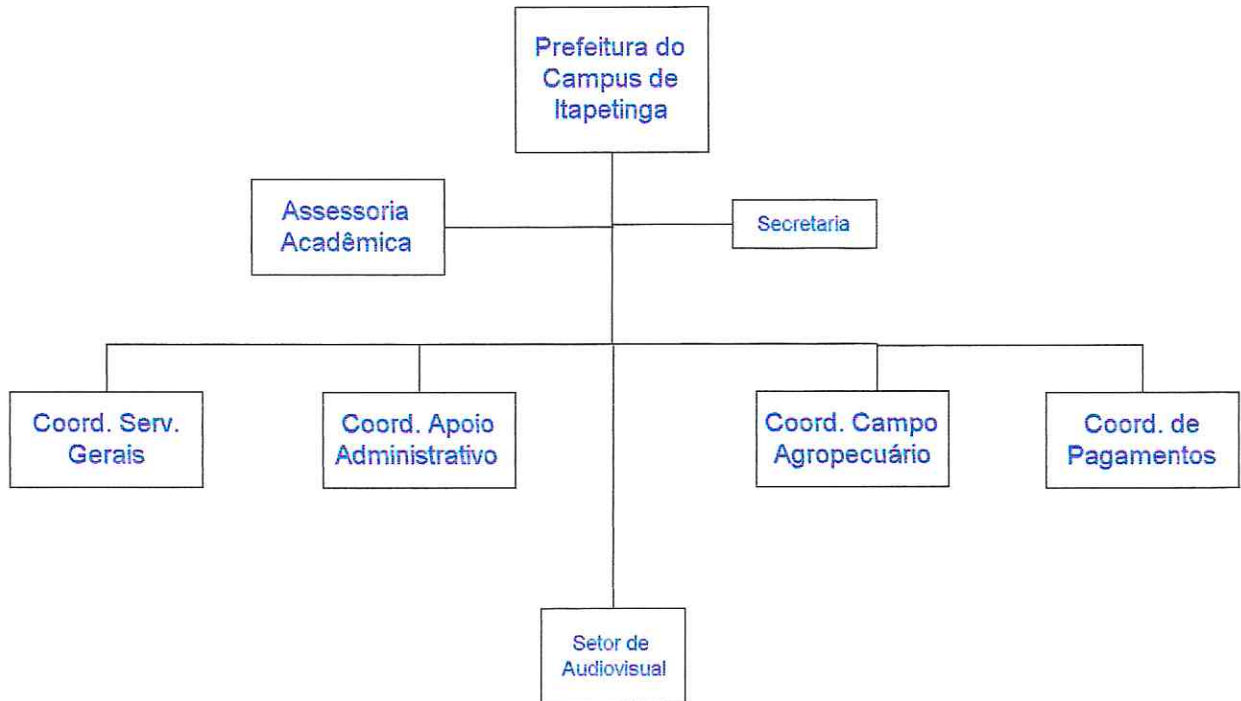
PREFEITURA DO CAMPUS DE JEQUIÉ



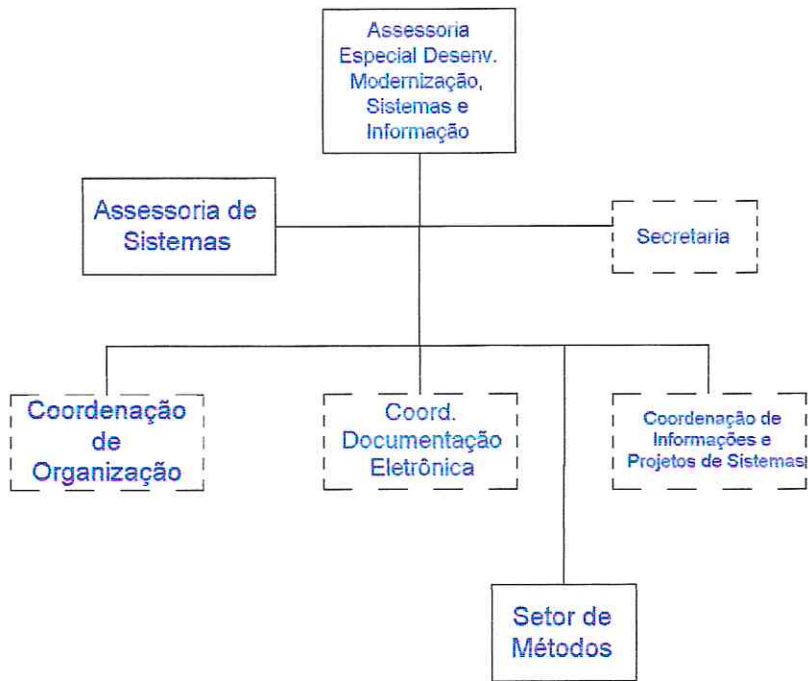
Legenda



PREFEITURA DO CAMPUS DE ITAPETINGA



ASSESSORIA ESPECIAL DE DESENV. MODERNIZAÇÃO, SISTEMAS E INFORMAÇÃO



Legenda



Órgão Previsto